

# Boston

# West Roxbury

www.WardMovesBoston.com

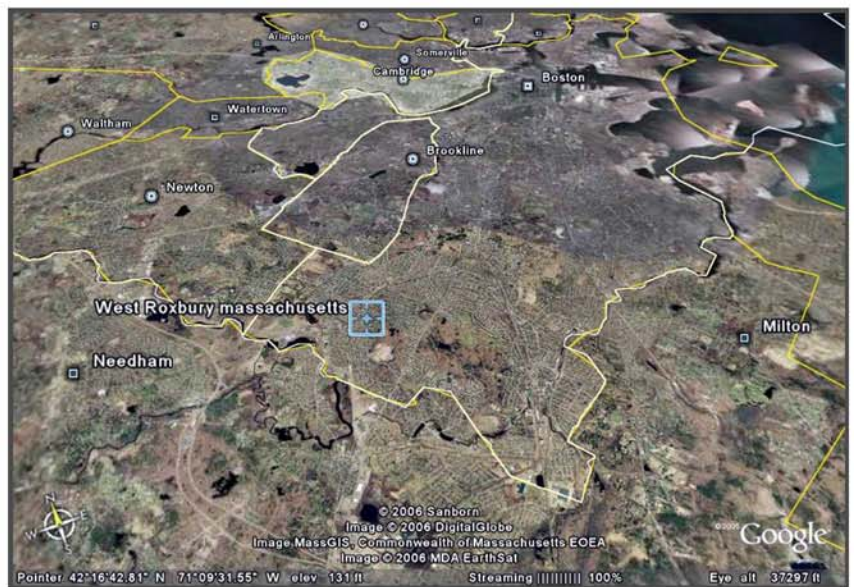
## Recently Sold



Average 2005 Sale Prices in Roslindale  
Single Family Homes: \$478,568  
Condominium: \$277,400

An attractive cape with a huge yard, this home is perfect for those looking for open space. Sitting on over 13,000 square feet of land there is a lot potential for future renovations and additions. This three bedroom, one and a half bath home features a beautiful fireplace and ornate mantel in the living room, new windows, updated kitchen and bath and a finished basement. There is also a 10'x18' deck overlooking the yard.

The most suburban of all of Boston's neighborhoods, West Roxbury has long been known for its high per-capita income. Striking Victorians are showcased on tree-shaded streets, and spaciousness is a key element in the long-established areas like Bellevue-La Grange. Here, meticulously groomed and sprawling yards complement the stately homes. Abundant parks create lush open space, crowned by the recreational jewel of Stonybrook Reservation, one of Boston's most panoramic havens. Growth in the Roxbury area has been relatively slow and steady over the decades. However, in recent years, an increasing number of young professionals have relocated into the area and infused a new sense of vitality. West Roxbury is located just 20 minutes from downtown Boston via private or public transportation. Routes 128 and 95 are just minutes from home, and shoppers enjoy close proximity to the Dedham Mall or the specialty shops along Route 1.



## WILLIAM RAVEIS

— REAL ESTATE & HOME SERVICES —

New England's Largest Family-Owned Real Estate Company

Ward Shifman

wshifman@rcn.com

617-633-7703

617-795-2998 (fax)

## Important Phone Numbers and Websites

### Municipal Offices

617-730-2010

[www.town.brookline.ma.us](http://www.town.brookline.ma.us)

### Public Schools

617-730-2401

<http://www.brookline.k12.ma.us/ps>