

Wellesley

www.WardMovesBoston.com

Recently Sold



Average 2005 Sale Prices in Wellesley
Single Family Homes: \$1,231,674
Condominium: \$676,718

This classic colonial features a handsome shingle style slate roof, central air, fireplace, a charming brick patio and fenced in yard. There are 5 bedrooms, 3 full bathrooms and a half bathroom. The master suite features French doors that open to a balcony. The mast bath has granite and marble counter tops and a Jacuzzi. This home has over 2500 square feet of space and sits on a quarter acre of land.

WILLIAM RAVEIS

— REAL ESTATE & HOME SERVICES —

New England's Largest Family-Owned Real Estate Company

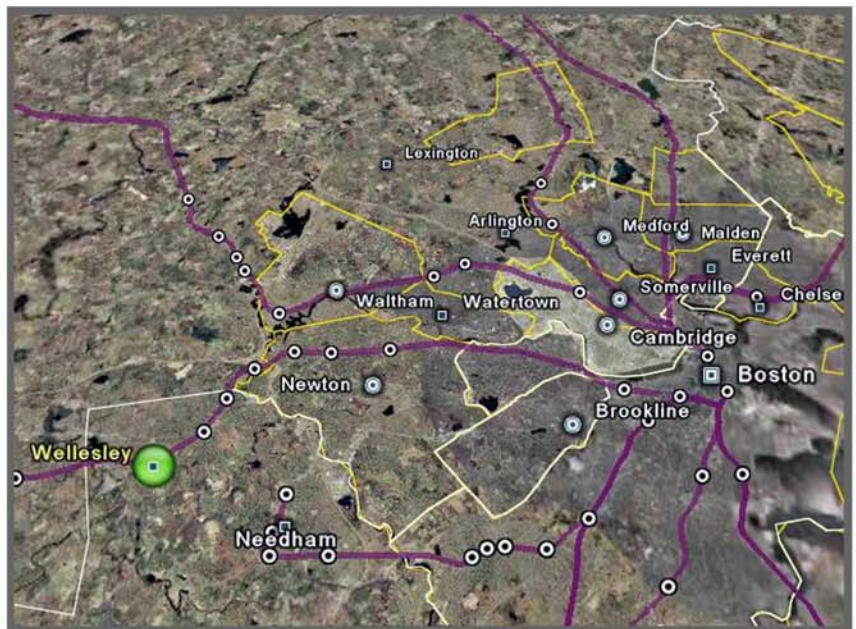
Ward Shifman

wshifman@rcn.com

617-633-7703

617-795-2998 (fax)

Ideally located along Route 9 just minutes from Boston's City Center, Wellesley boasts a quaint downtown shopping district with the ambiance of a large, charming village. The past is not only preserved in Wellesley but is enthusiastically celebrated. Housing is exceptionally attractive, and architectural styles tend to be diverse. In fact, Wellesley offers some of the most exceptional home choices and magnificent neighborhood settings in all of New England. Area youth enjoy the finest of education programs and facilities in both public and private schools, and three college enrich the town with the beauty of their campuses. This "college town" influence creates a stimulating social environment on intellectual and cultural levels. Abundant recreational facilities include an attractive community center, conservation land, challenging golf courses, horseback riding areas, ice-skating, a country club, Morses Pond for swimming and sailing, and Centennial Park for hiking and picnicking.



Important Phone Numbers and Websites

Municipal Offices

781-431-1019

www.ci.wellesley.ma.us

Public Schools

781-446-6200

www.wellesley.mec.edu