

# Natick

www.WardMovesBoston.com

## Recently Sold



Average 2005 Sale Prices in Natick  
Single Family Homes: \$552,194  
Condominiums: \$298,298

This Natick colonial is located on a terrific corner lot. It features original period detailing including hardwood floors, glass doorknobs and brass finials. The kitchen and bathrooms have been newly renovated. This home also has central air conditioning and heating, a finished sunroom, brick patio and walk-up attic. There are 3 bedrooms, 2 full bathrooms and a 2 car detached garage. This house has maintained its original charm in a popular neighborhood

**WILLIAM RAVEIS**

— REAL ESTATE & HOME SERVICES —

New England's Largest Family-Owned Real Estate Company

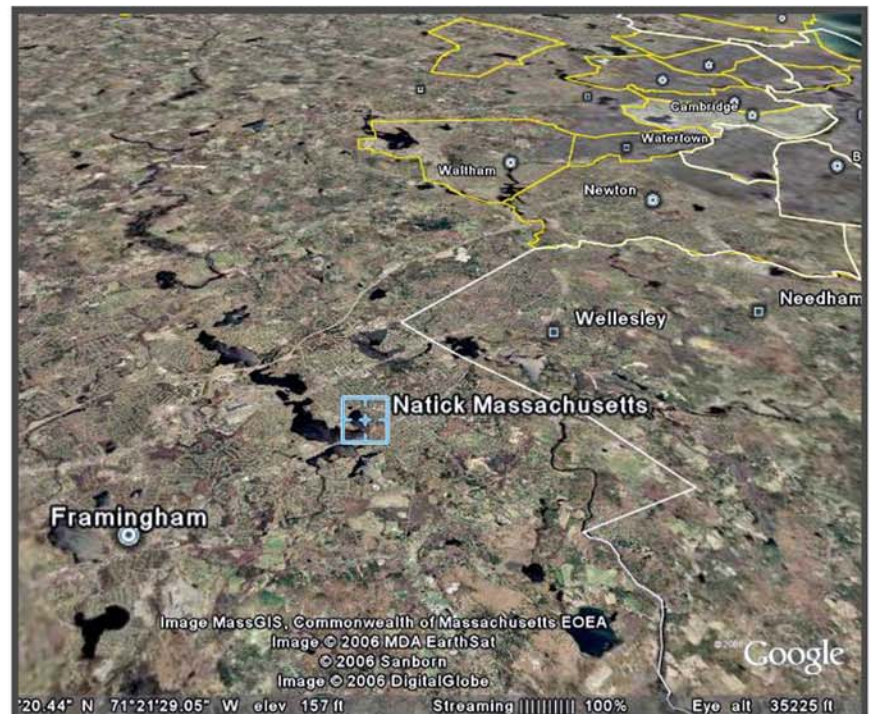
**Ward Shifman**

wshifman@rcn.com

617-633-7703

617-795-2998 (fax)

The blending of old-world charm, modern construction, and progressive services enables Natick to offer a balanced variety of public services, shopping facilities, and architectural styles. An excellent public school system features beautiful campuses that have attracted national attention, and the housing options are both diverse and attractive. Route 9 and the Massachusetts Turnpike provide residents with an easy commute to Boston. Primarily residential, Natick also supports a strong commercial sector. Extensive shopping is found in the downtown district, at Natick Mall, and along Route 9 at Sherwood Plaza. Recreational amenities are abundant in Natick with a state park and beach area. Tennis courts, YMCA, parks, playgrounds, playing fields, private swim and tennis club, Memorial Beach, and a yacht club add to the quality of life.



## Important Phone Numbers and Websites

**Municipal Offices**

508-647-6430

www.natickma.org

**Public Schools**

508-647-6500

www.natick.k12.ma.us