

Dedham

www.WardMovesBoston.com

Recently Sold



Average 2005 Sale Prices in Dedham
Single Family Homes: \$458,080
Condominium: \$345,444

A beautifully decorated split level ranch located in the desirable Precinct 1 neighborhood. This home has 3-4 bedrooms, a hug modern family room with plenty of windows and direct access to a large deck overlooking a private fenced in backyard. The home has been maintained and has had several updates including renovated bathrooms and kitchen. There are 2 fireplaces and central air conditioning, as well as hardwood floors throughout. The lower level has a 2 car garage, storage room, full bath, laundry and playroom.

WILLIAM RAVEIS

— REAL ESTATE & HOME SERVICES —

New England's Largest Family-Owned Real Estate Company

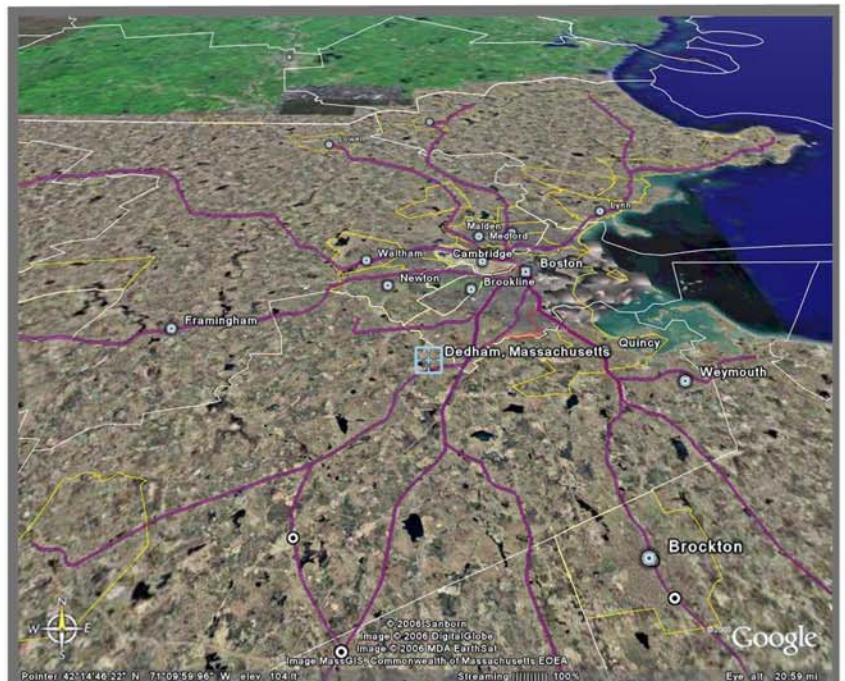
Ward Shifman

wshifman@rcn.com

617-633-7703

617-795-2998 (fax)

Serving as the seat of Norfolk County, the Dedham community offers an old-fashioned colonial town that has grown slowly over the years and preserved its original character and charm. The vast majority of Dedham's homes are individually owned and single-family in design, ranging from vintage colonials in long-established neighborhoods and the "antique village" to million-dollar estate properties bordering the Charles River. Excellent public and private schools provide a quality education to area youth, emphasizing a progressive curriculum and many specialized programs. The Charles River area and well-developed community facilities provide abundant opportunities for relaxation and recreation. Amenities include an indoor swimming pool, lush town parks, playgrounds, picnic areas, and tennis courts. Easy access to Interstate 95 and Route 128 is complemented by the convenience of two commuter rail stations that ensure an easy commute to Boston's South Station.



Important Phone Numbers and Websites

Municipal Offices

781-751-9100

www.town.dedham.ma.us

Public Schools

781-326-5622

www.dedham.k12.ma.us