

# Cambridge

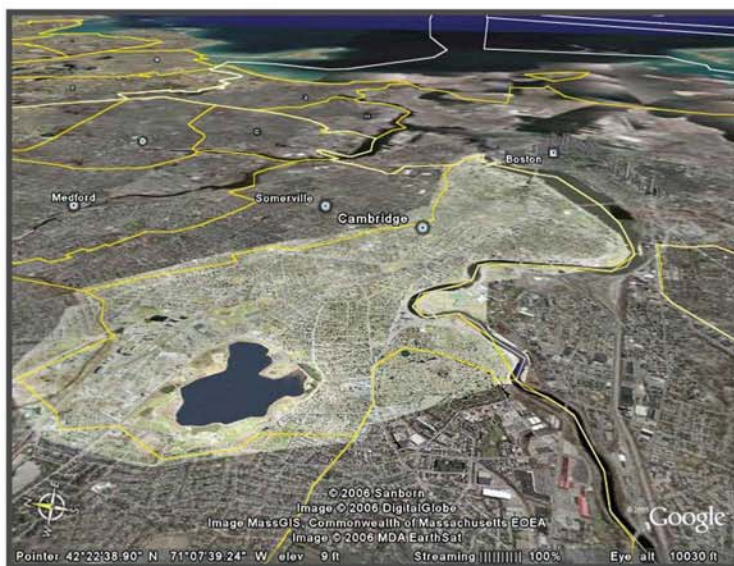
## Recently Sold



**Sale Price: \$2,350,000**

This elegant single family home can best be described as private and serene. Built with a separate entrance for an au pair, with an eye toward comfort, balance and light, this home has the space for entertaining with access to gardens. The generously proportioned rooms feature recessed lights, detail moldings and built-in cabinets. Also featured is a state of the art kitchen, 5 bedrooms, 5 full baths and a half bath, a Jacuzzi and a two car garage.

Synonymous with education and culture, Cambridge is the highly celebrated home of Harvard University and Massachusetts Institute of Technology. A diverse city of tightly knit neighborhoods just three miles from Boston, the focal point of the city is Harvard Square, an ideal place for shopping socializing, and dining. Brick sidewalks, Victorian clapboard houses, and a serene location along the Charles River add to the charm of community life. While Cambridge is a fascinating town that stretches far to accommodate the impressive population of students and faculty, it is also a community of neighborhoods that boast a diversity of residents—including some famous families like the Rockefellers. Excellent subway and bus service make it unnecessary to own a car. Industry and high-tech enterprises have grown considerably, taking full advantage of the intellectual prowess that pervades the area. The Charles River offers recreational opportunities from boating and sailing to jogging and biking trails along its banks. Other amenities include tennis courts, playing fields, playgrounds, a golf course, swimming pools and multipurpose trails.



**WILLIAM RAVEIS**

— REAL ESTATE & HOME SERVICES —

New England's Largest Family-Owned Real Estate Company

**Ward Shifman**

wshifman@rcn.com

617-633-7703

617-795-2998 (fax)

## Important Phone Numbers and Websites

**Municipal Offices**

617-349-4260

[www.cambridgema.gov](http://www.cambridgema.gov)

**Public Schools**

[www.cpsd.us](http://www.cpsd.us)