

Brookline

www.WardMovesBoston.com

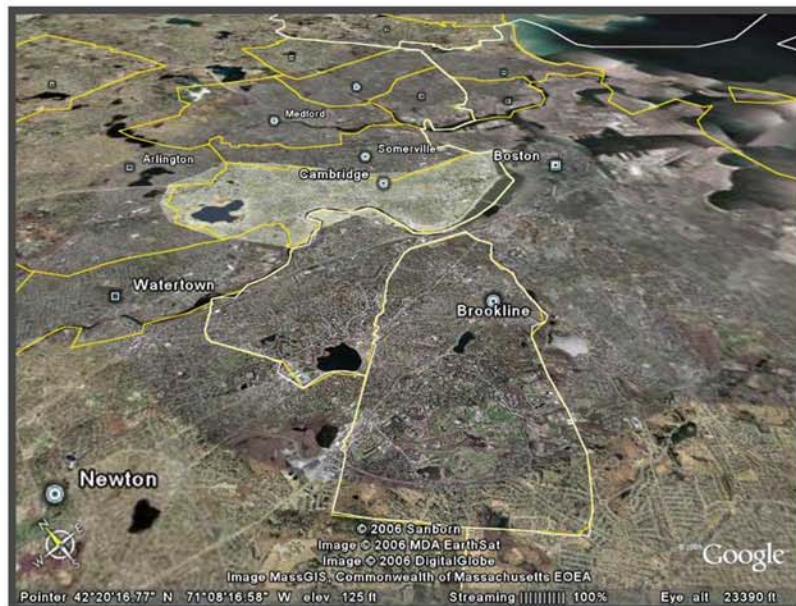
Recently Sold



Average 2005 Sale Prices in Brookline
Single Family Homes: \$1,516,230
Condominium: \$536,179

'Hilltop' Extraordinary 1920's brick Georgian home in prestigious Sargent Estates; a private countrylike enclave yet 15 minutes to Boston. Traditional, gracious home with elegant beautifully proportioned rooms for elegant entertaining and comfortable family spaces for everyday life. This fantastic home features five fireplaces, paneled library, greenhouse, courtyard with fountain. Mature landscape with formal gardens and natural woodlands. A gracious family home.

Home to a number of premier historic properties and the birthplace of President John F. Kennedy, Brookline was originally a haven for Boston's elite. Although the population has diversified, many doctors, professors, and businessmen make their home in this cosmopolitan town which is politically and artistically active and enjoys a high quality of public services. Abundant cultural attractions including historic sites and a cosmopolitan ambiance as well as a fine park system and recreational facilities contribute to the desirability of this area. Brookline's educational system, with its superb college prep courses, is regarded as one of the nation's finest. The area is further enhanced by a number of private schools. Commuters appreciate the efficient MBTA service on the Green Line. Single family homes and condominiums are available in a wide variety of prices and settings.



WILLIAM RAVEIS

— REAL ESTATE & HOME SERVICES —

New England's Largest Family-Owned Real Estate Company

Ward Shifman

wshifman@rcn.com

617-633-7703

617-795-2998 (fax)



Public Schools

617-730-2401

<http://www.brookline.k12.ma.us/psb/>

Municipal Offices

617-730-2010

www.town.brookline.ma.us