

# Ashland

www.WardMovesBoston.com

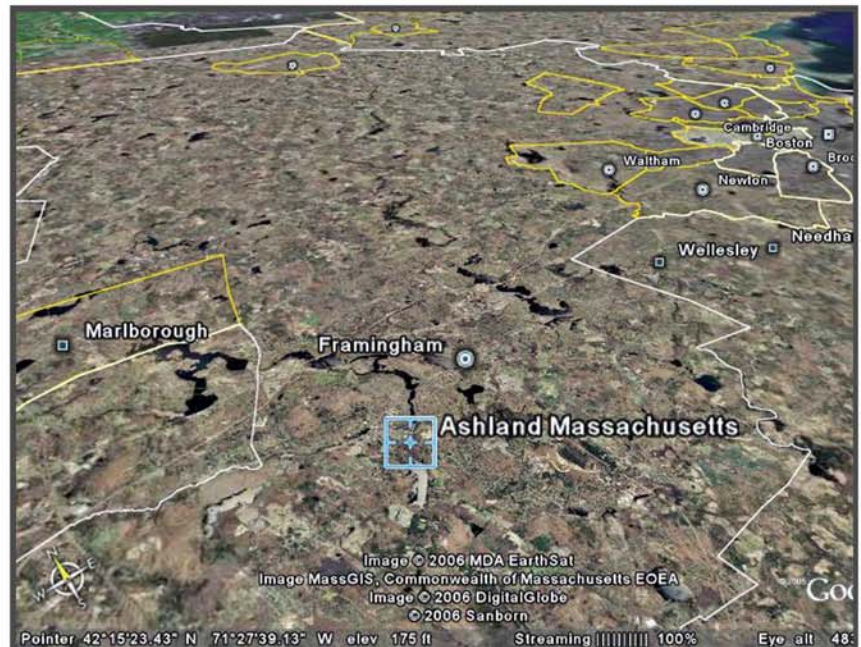
## Recently Sold



Average 2005 Sale Prices in Ashland  
Single Family Homes: \$468,716  
Condominiums: \$363,461

With five bedrooms, three and a half baths, and a walk out basement, this home offers a huge amount of space! The gourmet eat-in kitchen features a center granite island, ceiling pot rack, and access to the back deck. The master suite offers a Jacuzzi, walk in closets and tray ceilings. There are hardwood floors in the grand foyer, kitchen, living and dining rooms. Truly a modern home to fall in love with.

As a quiet suburb with a pleasing mix of homes styles, Ashland neighborhoods are surrounded by rich farmland, lush woods, and pastures. Commuters are drawn to this area for the easy access it provides to major thoroughfares as well as the potential for generous lot sizes and lovely homes graced by large, beautiful yards. Although Ashland was once a manufacturing community, most famous as the home of General Electric's Ashland Clock Company, rapid residential growth in recent decades has all but eclipsed that former image. New development is evident everywhere, from modern homes to a new shopping center. Community spirit is strong, evidenced by the number of civic, social, service, and athletic organizations. Recreational activities from picnicking and hiking to fishing are enhanced by the close proximity of Ashland State Park.



## WILLIAM RAVEIS

— REAL ESTATE & HOME SERVICES —

New England's Largest Family-Owned Real Estate Company

Ward Shifman

wshifman@rcn.com

617-633-7703

617-795-2998 (fax)

## Important Phone Numbers and Websites

### Municipal Offices

508-881-0101

www.ashlandmass.com

### Public Schools

508-881-0150

www.ashlandhs.org

### Chamber of Commerce

508-879-5600

www.metrowest.org